



Austen Drive | Stock | Ingatestone | CM4 9FB

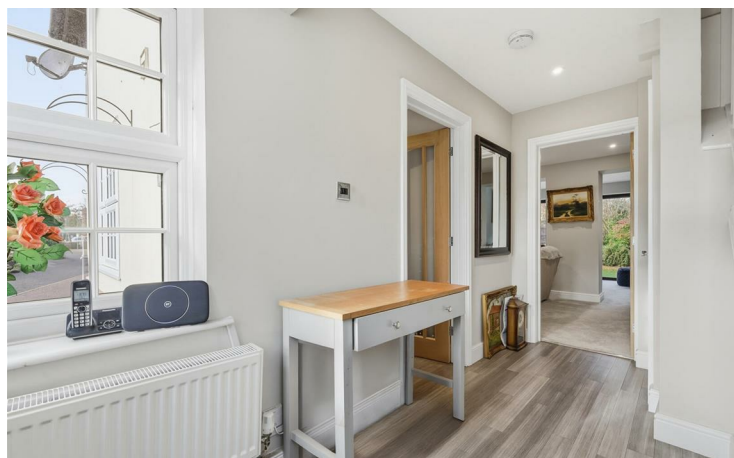
Chain Free £675,000

ICON
RESIDENTIAL

Austen Drive | Stock
Ingatstone | CM4 9FB
Chain Free £675,000

- 3 spacious bedrooms
- Modernised end of terrace house
- Cosy reception room
- Private rear garden with Astroturf lawn
- Double glazed windows
- Located in Stock village
- Close to local amenities
- Easy access to transport
- 1143.00sq ft of space
- Viewing recommended

Nestled in the charming area of Austen Drive, Stock, Ingatstone, this delightful semi-detached house offers a perfect blend of comfort and practicality. Spanning an impressive 1143 square feet, the property features a welcoming reception room that provides an ideal space for relaxation and entertaining guests.

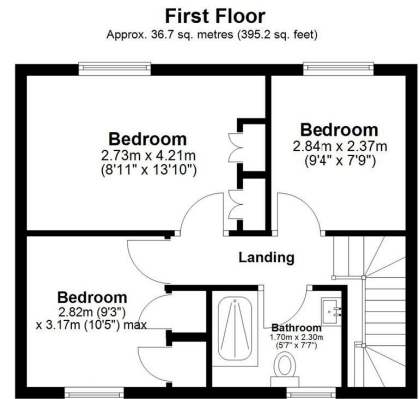
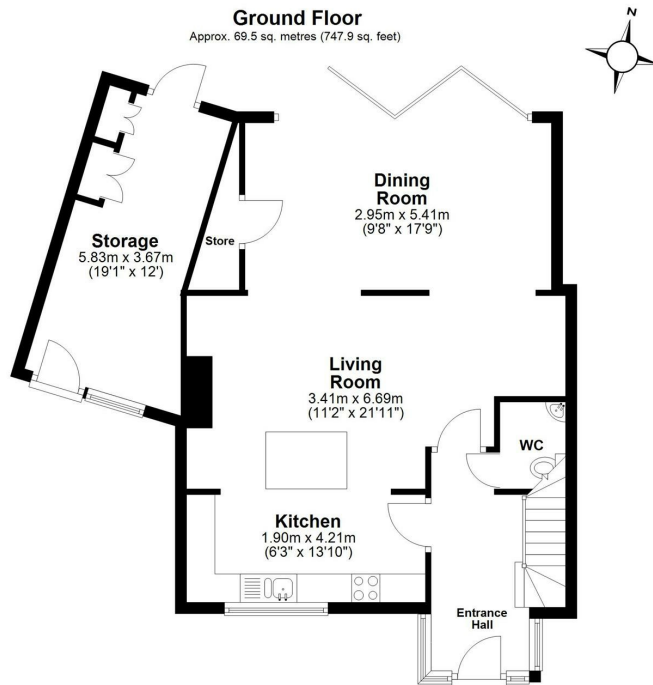
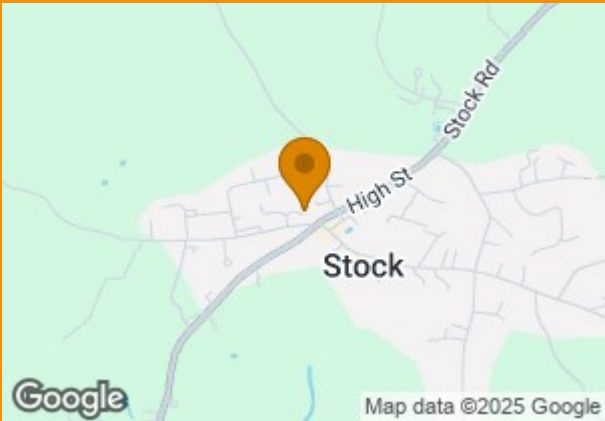




The home boasts three well-proportioned bedrooms, making it an excellent choice for families or those seeking extra space for guests or a home office. The bathroom is conveniently located, ensuring ease of access for all residents.

One of the standout features of this property is the converted garage, which provides ample storage solutions, helping to keep your living areas clutter-free. Additionally, the property offers parking, a valuable asset in today's busy world.

With its appealing layout and practical features, this semi-detached house on Austen Drive is a wonderful opportunity for anyone looking to settle in a friendly community. Whether you are a first-time buyer or seeking a family home, this property is sure to meet your needs and exceed your expectations.

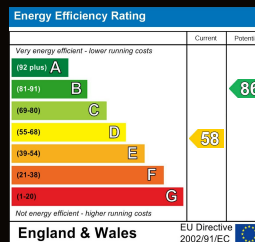


Total area: approx. 106.2 sq. metres (1143.1 sq. feet)

All measurements have been taken as a guide to prospective buyers only and are not precise. This plan is for illustrative purposes only and no responsibility for any error, omission or misstatement. The services, systems and appliances shown have not been tested and no guarantee as to their operability or efficiency can be given. Measurements may have been taken from the widest area and may include wardrobe/cupboard space. No guarantee is given to any measurements including total areas. Buyers are advised to take their own measurements.

© @modephoto.uk | www.modephoto.co.uk
Plan produced using PlanUp.™

Austen Drive



Hallmark House
25 Downham Road
Essex
CM11 1PU

steven.hartman@icon-residential.co.uk
<http://www.icon-residential.co.uk/>